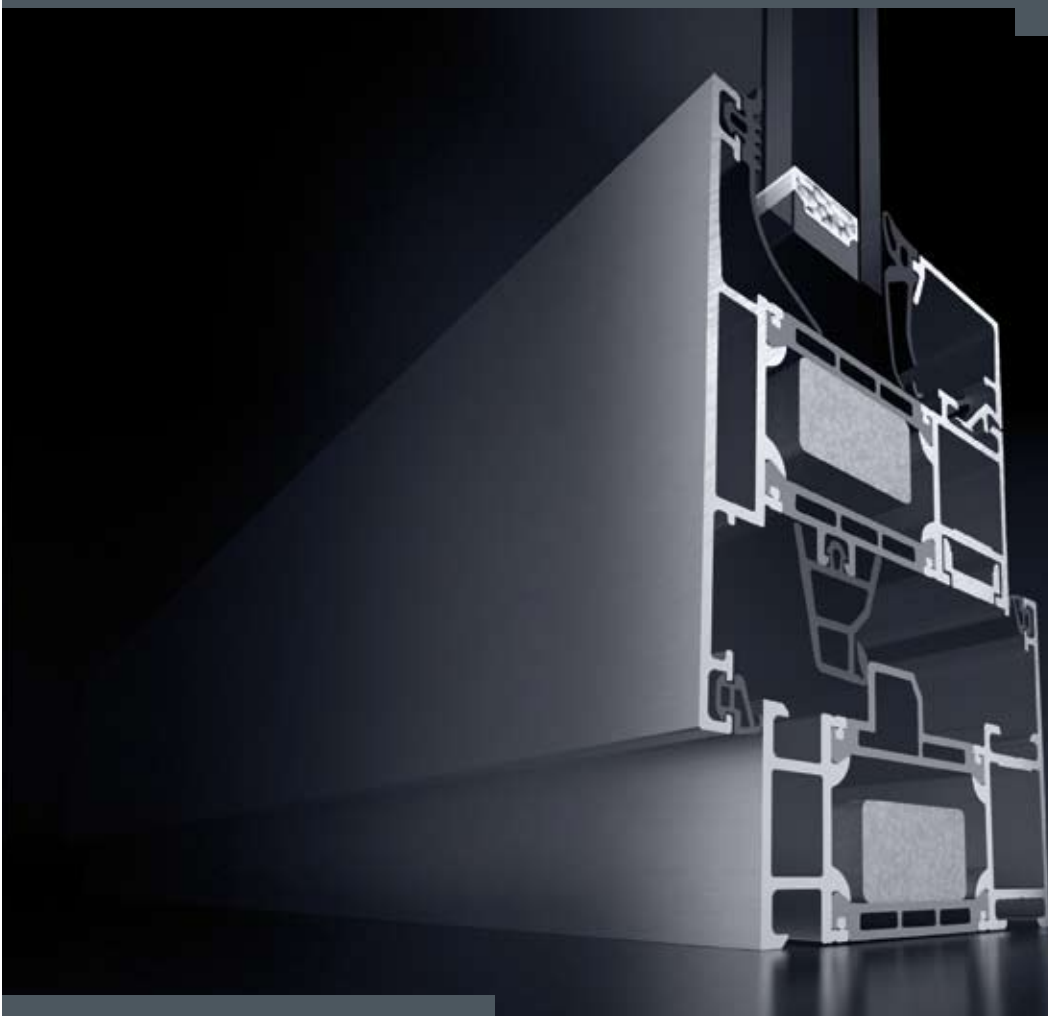
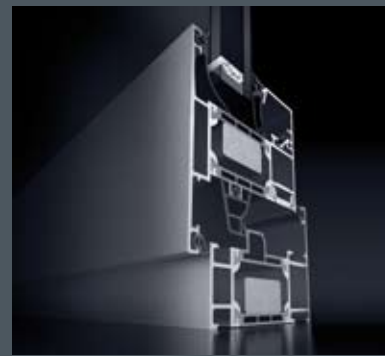
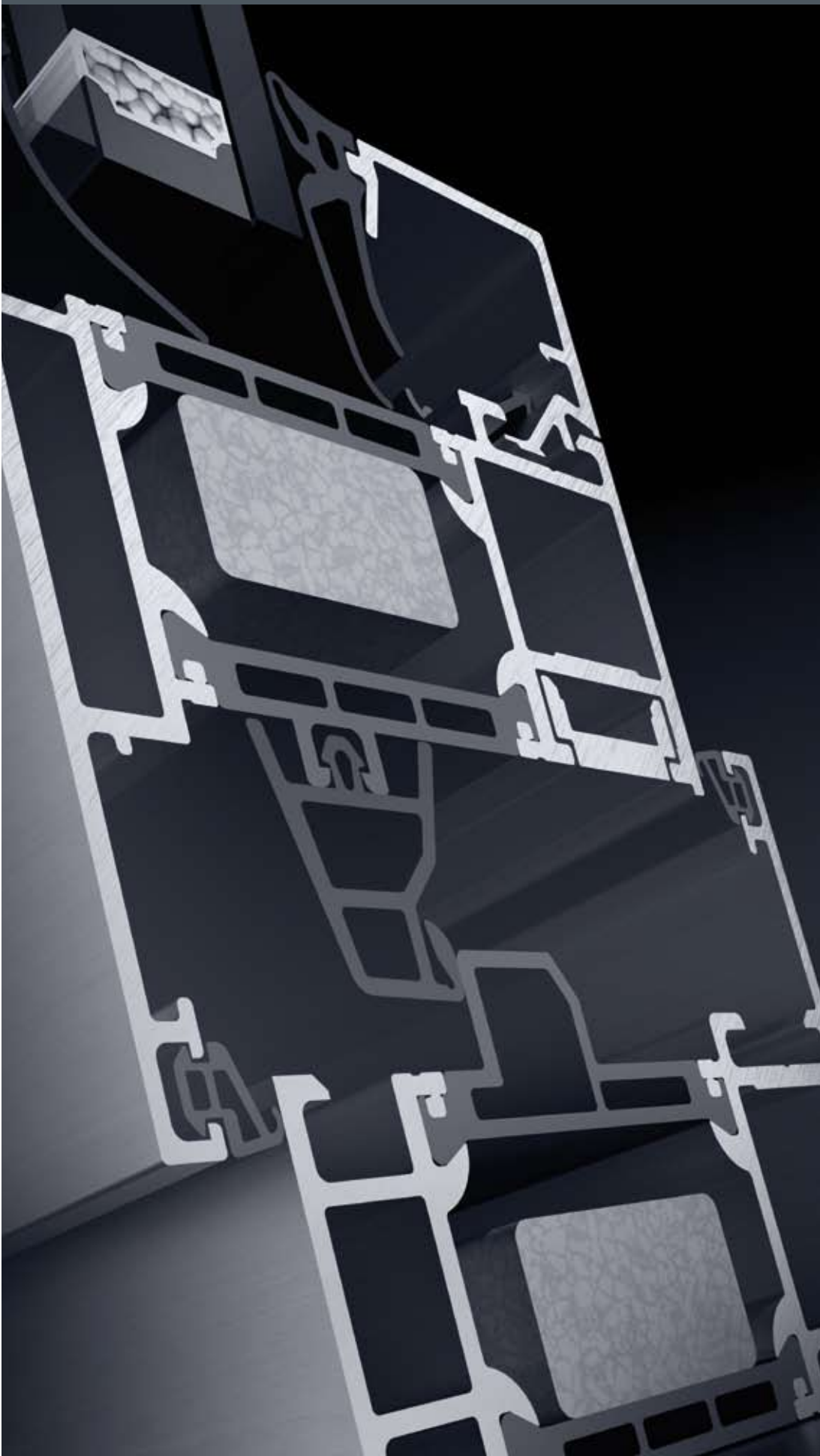


Schüco Window AWS Outward Opening





Schüco AWS 70.HI



Schüco AWS 65



Schüco AWS 60.HI



Schüco AWS 60



Schüco AWS 50

Schüco Window AWS Outward Opening

This new aluminium outward opening window range extends the successful Schüco AWS window concept with class-leading features, based on a platform of interchangeable components. Four frame depths are available – 50mm, 60mm, 65mm and 70mm – to meet insulation, performance and size requirements while hardware options include handles, folding openers, safety stays and security rated locking.

Insulation

The Schüco AWS outward opening window system offers a choice of thermally insulated frames designed to meet Building Regulations or higher specifications. This is achieved with a combination of unique frame insulation bars, special EPDM sealing gaskets and patented foam insulation material together with high performance glazing. For examples of whole window U values see the tables overleaf.

Security and safety

Basic security fittings are available along with those that meet BS 7950:1997, the security standard specified in Secured by Design. In addition, folding openers or restrictor devices can be specified to ensure the safety and comfort of building occupants.

Design

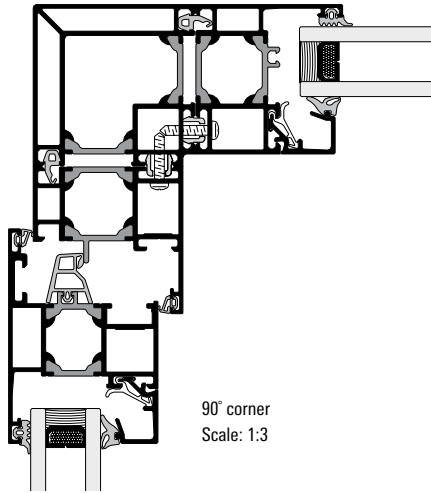
Outer frame/vent sight lines from 99mm are complemented by a range of glazing beads giving visual variations with a choice of glazing unit thicknesses. Design flexibility is further enhanced

by a wide range of painted and anodised surface finishes including different colours on the inside and outside faces.

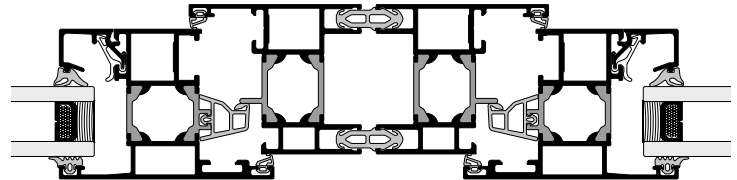
Consistent appearance

Schüco AWS outward opening windows are compatible with Schüco AWS inward opening windows and Schüco ADS doors, and have special outer frames for insertion into Schüco FW 50+ and FW 60+ façades. There are also numerous profiles for the construction of bay windows, structural elements, expansion joints and the fitting of trickle ventilators.

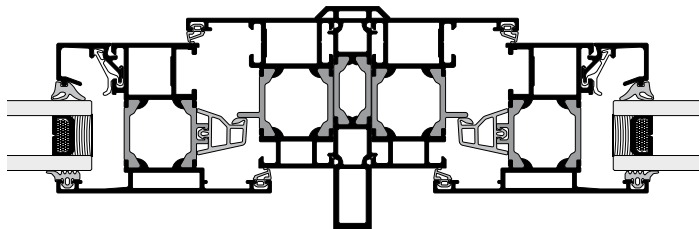
Schüco AWS. The outward opening window with all the answers



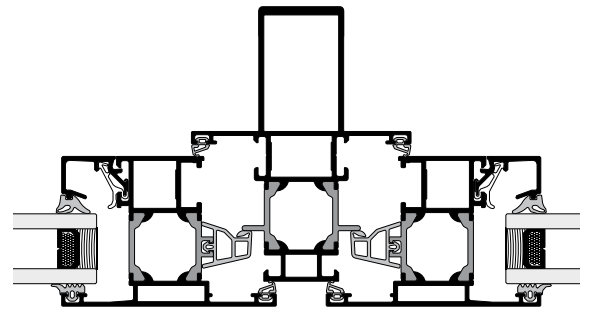
90° corner
Scale: 1:3



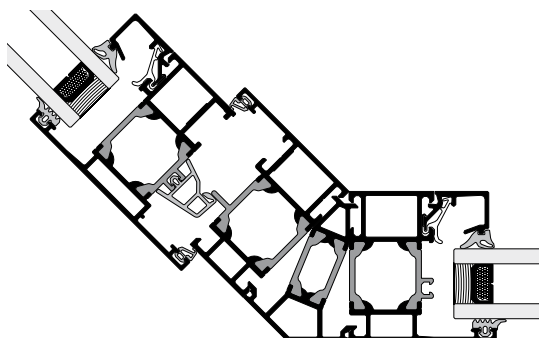
Expansion joint
Scale: 1:3



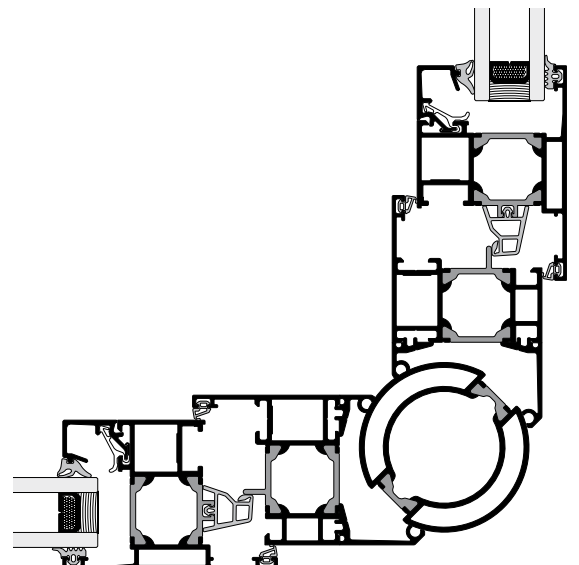
Structural coupling
Scale: 1:3



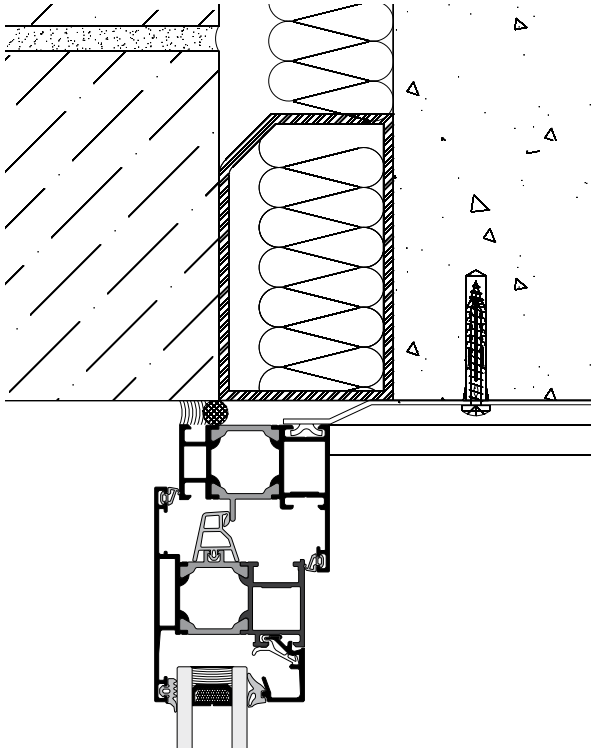
Structural mullion
Scale: 1:3



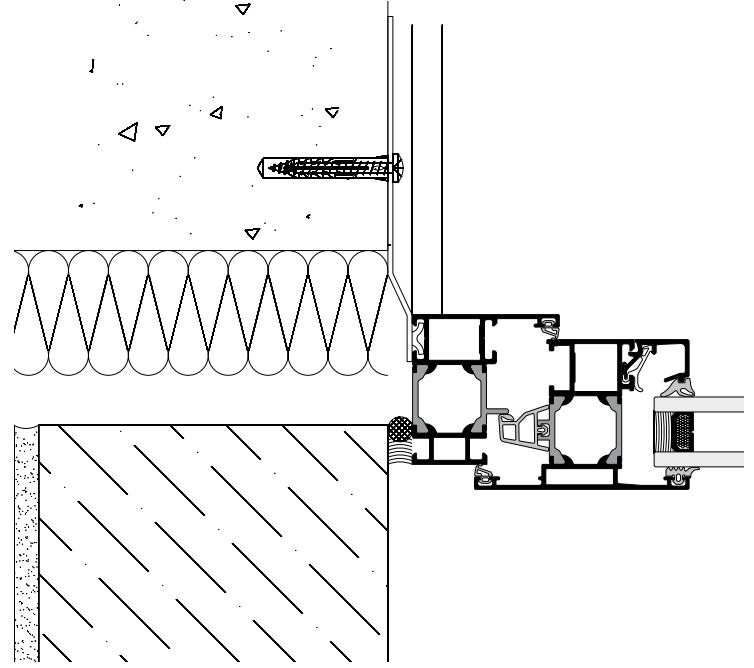
135° corner
Scale: 1:3



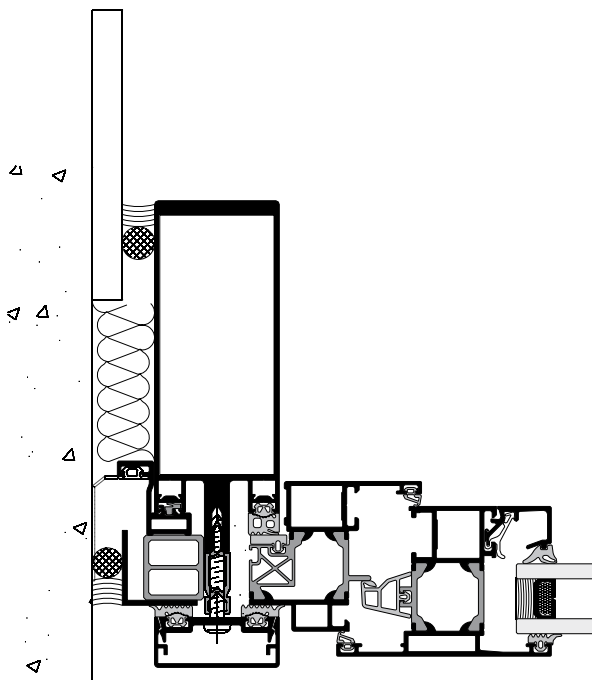
Variable angle corner
Scale: 1:3



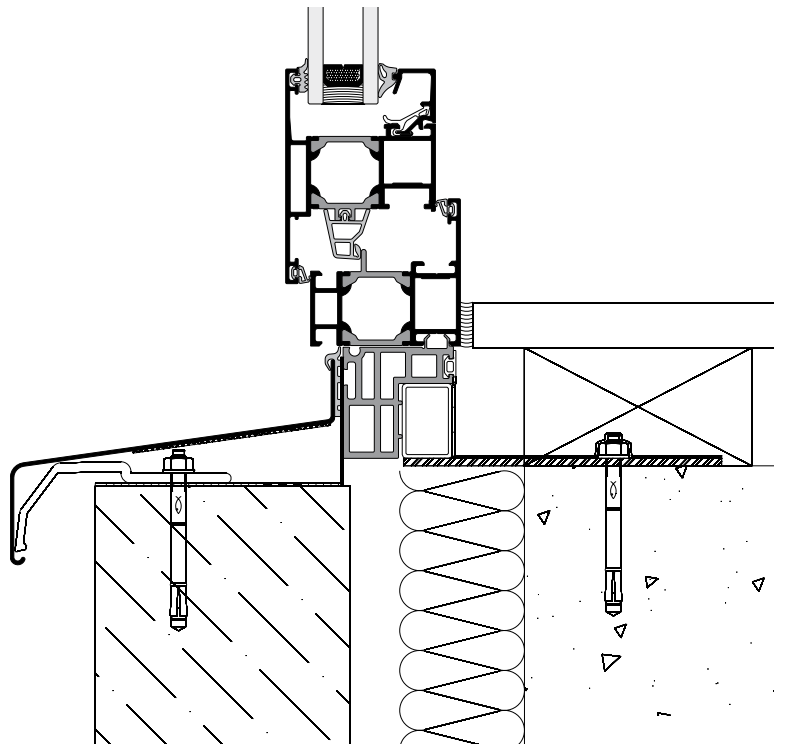
Typical head detail
Scale: 1:3



Typical side detail
Scale: 1:3



Façade with insert window
Scale: 1:3



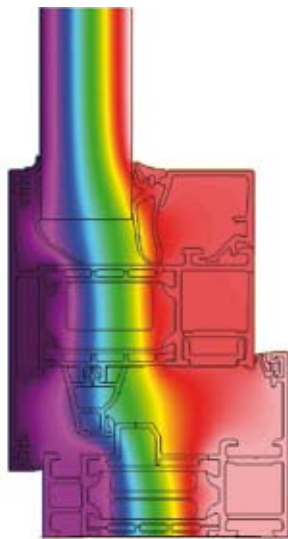
Typical sill detail
Scale: 1:3

Thermal insulation

With the increasing importance of thermal insulation to minimise energy costs and reduce CO₂ emissions, Schüco outward opening windows are designed to meet Building Regulations now and into the future.

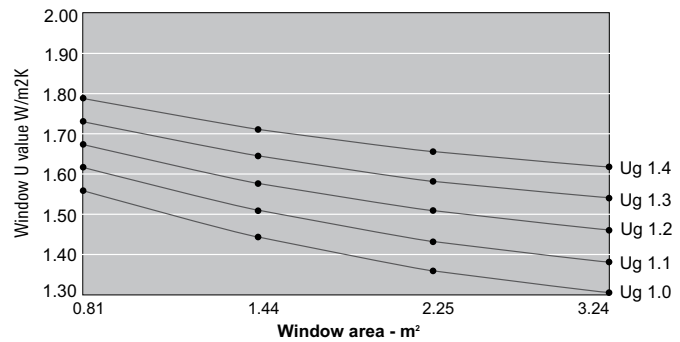
These graphs show four examples of Schüco AWS outward opening window U values: AWS 60, AWS 60.HI, AWS 65 and AWS 70.HI. Each window is shown with five alternative glazing options with centre pane values (U_g) ranging from 1.4 W/m²K down to 1.0 W/m²K.

The thermal calculations are in accordance with BS EN 10077 Part 1 and 2 with a ψ value of 0.08.

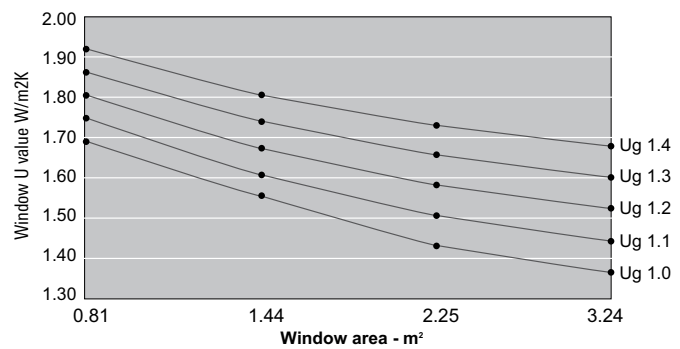


Schüco AWS 70.HI Outward Opening Window

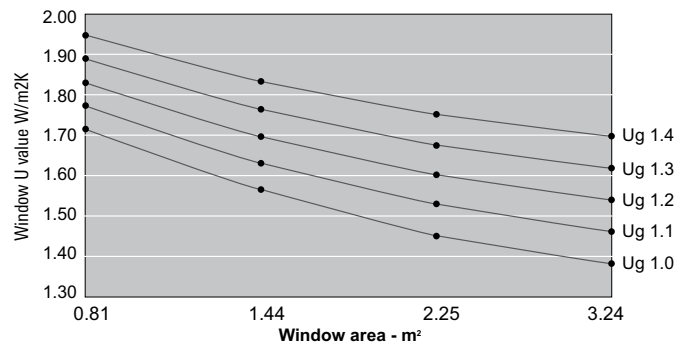
Higher levels of thermal performance thanks to foam filled insulating bars and special gaskets.



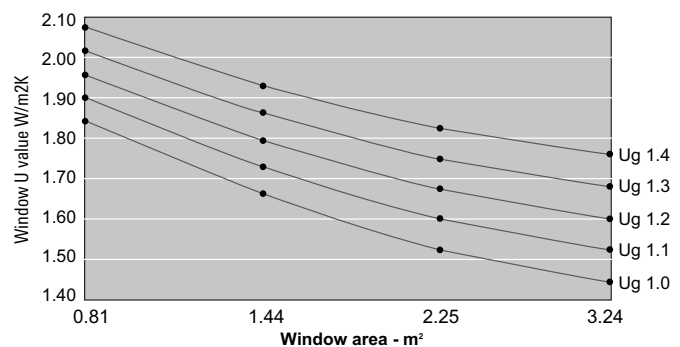
Schüco AWS 70.HI Outward Opening Window: U_w values down to 1.30 W/m²K



Schüco AWS 65 Outward Opening Window: U_w values down to 1.37 W/m²K



Schüco AWS 60.HI Outward Opening Window: U_w values down to 1.39 W/m²K



Schüco AWS 60 Outward Opening Window: U_w values down to 1.45 W/m²K

| Schüco windows | AWS 50 | AWS 60 | AWS 60.HI | AWS 65 | AWS 70.HI |
|---|--------------|--------------|--------------|--------------|--------------|
| Energy | | | | | |
| Thermally insulated | ■ | ■ | | ■ | |
| Highly thermally insulated | | | ■ | | ■ |
| U _f values W/m ² K (with friction hinges) | 3.2 | 2.4 | 2.1 | 2.0 | 1.7 |
| Face width (mm) | 105 | 105 | 105 | 105 | 105 |
| Design | | | | | |
| Basic depth | | | | | |
| 50mm | ■ | | | | |
| 60mm | | ■ | ■ | | |
| 65mm | | | | ■ | |
| 70mm | | | | | ■ |
| Dual colour option | ■ | ■ | ■ | ■ | ■ |
| Fittings | | | | | |
| Friction hinges | ■ | ■ | ■ | ■ | ■ |
| Butt hinges | ■ | ■ | ■ | ■ | ■ |
| Cockspur handle locking | ■ | ■ | ■ | ■ | ■ |
| Multi-point locking | ■ | ■ | ■ | ■ | ■ |
| Folding openers | ■ | ■ | ■ | ■ | ■ |
| Areas of use | | | | | |
| Standard openings | ■ | ■ | ■ | ■ | ■ |
| Ribbon windows | ■ | ■ | ■ | ■ | ■ |
| Façade insert windows | ■ | ■ | ■ | ■ | ■ |
| Compatible door system | ■ | ■ | ■ | ■ | ■ |
| Opening types | | | | | |
| Projected top hung | ■ | ■ | ■ | ■ | ■ |
| Projected side hung | ■ | ■ | ■ | ■ | ■ |
| Top hung with butt hinge | ■ | ■ | ■ | ■ | ■ |
| Side hung with butt hinge | ■ | ■ | ■ | ■ | ■ |
| Maximum sizes | | | | | |
| | w x h | w x h | w x h | w x h | w x h |
| Projected top hung (mm) | 1600 x 2000 | 2000 x 2000 | 2000 x 2000 | 2000 x 2000 | 2000 x 2000 |
| Projected side hung (mm) | 838 x 1600 | 838 x 1900 | 838 x 1900 | 838 x 1900 | 838 x 1900 |
| Top hung with butt hinges (mm) | 1600 x 1300 | 1900 x 1450 | 1900 x 1450 | 1900 x 1450 | 1900 x 1450 |
| Side hung with butt hinges (mm) | 1300 x 1600 | 1450 x 1900 | 1450 x 1900 | 1450 x 1900 | 1450 x 1900 |
| Maximum weight | | | | | |
| Projected top hung (kg) | 100 | 130 | 130 | 130 | 130 |
| Projected side hung (kg) | 52 | 52 | 52 | 52 | 52 |
| Top hung with butt hinges (kg) | 75 | 75 | 75 | 75 | 75 |
| Side hung with butt hinges (kg) | 90 | 90 | 90 | 90 | 90 |
| Security | | | | | |
| Burglary resistance | | | | | |
| BS 7950 | ■ | ■ | ■ | ■ | ■ |



Handles

Both locking and non-locking handles in a range of finishes are available for the Schüco AWS multi-point locking mechanism, which take their design lead from the award-winning family of Schüco window and door handles.

Schüco – your partner for windows and solar products

As leading innovator in system-based construction, Schüco supplies components for the whole building envelope, including specialised software solutions for design, construction, calculation and fabrication.



■ Aluminium systems

■ Steel systems

■ Solar products

■ Schüco Design

Schüco International

Whitehall Avenue Kingston

Milton Keynes MK10 0AL

Telephone: 01908 282111 Fax: 01908 282124

www.schueco.co.uk

Schueco UK Ltd
Whitehall Avenue
Kingston
Milton Keynes
MK10 0AL

Tel: 01908 282111
email. mkinfobox@schueco.com
www.schueco.co.uk